



**Luanne Patterson**

Senior System Manager  
Environmental Assessment

Directrice de l'analyse des systèmes  
Évaluation environnementale

Box 8100  
Montreal, Quebec Canada  
H3C 3N4

Boite 8100  
Montréal, Québec/Canada  
H3C 3N4

5/4/2020

**RE: CN RIGHT OF WAY VEGETATION CONTROL**

Dear Mayor,

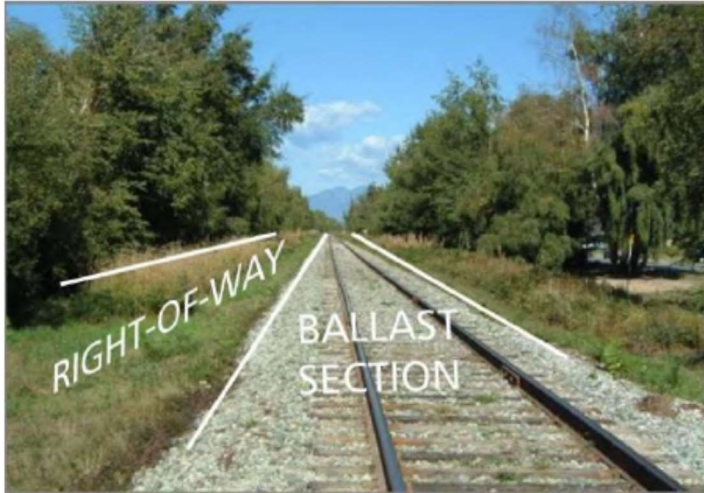
We are reaching out in order to advise you of our vegetation control activities in your area between May and October 2020. A regularly updated schedule will be available at [www.cn.ca/vegetation](http://www.cn.ca/vegetation).

If not managed properly, trees, brush or other vegetation can severely compromise public safety. Vegetation can impede the view motorists have of incoming trains, increase the risk of crossing accidents. Moreover, unwanted vegetation can damage the integrity of the railway, interfere with signals and switches, contribute to track side fires, compromise employee safety, reduce visibility for train crews at road crossings/train control signals and track side warning devices, to name a few of the potential risks. Our annual vegetation control program is designed to mitigate these risks by managing brush, weeds and other undesirable vegetation. In short, CN's vegetation control program is a critical contributor to safe operations; hence, these vegetation control measures assist in contributing to the overall safety of the communities through which we operate.

CN manages vegetation using both chemical and mechanical methods. CN is sensitive to concerns your community may have regarding chemical vegetation control. At CN, we are committed to environmental safety and sustainability

The track infrastructure is composed of two main sections, the ballast section typically ranging from 16-24 feet (which is primarily gravel and supports the track structure) and the right of way portion (which is the area outside of the ballast to the CN property boundary).

The 16-24 feet ballast section and areas around signals and communications equipment that is critical for safe railway operations must be managed using chemical methods. Application in these safety critical areas is done using spray truck or spray train with downcast nozzles that spray a short distance above the ground surface with shrouded booms. The right of way section is primarily maintained using mechanical control methods such as mowing or brush cutting. Small areas within the right of way that contain noxious or invasive weeds may be chemically treated.



CN must use chemical control techniques on the ballast section throughout the network for safety reasons. When chemicals are applied to the ballast section via spray train or truck, as outlined in the photo below, additives called surfactants that make the chemical work better may be included to help manage the application.



CN has retained professional contractors qualified to undertake this work who are required to comply with laws and regulations applicable to CN. In addition, the contractors ensure that vegetation control is performed with consideration of the environment and in accordance with the highest industry standards.

Should your Town/City have any noxious weed removal requests, we ask that you contact CN's Public Inquiry Line at [contact@cn.ca](mailto:contact@cn.ca) or fill out the form at [www.cn.ca/vegetation](http://www.cn.ca/vegetation) before June 1, 2020 with the specific information and location. CN will make every effort to include those locations as part of our 2020 Vegetation Management Program. All notices sent after the above mentioned date will be included in the 2021 Vegetation Management Plan.

We look forward to collaborating with you and answering any questions you may have regarding our vegetation control activities in your community. In that respect, please find attached the notices CN is publishing in local papers to advise the public. We would kindly ask that you post copies on your community's website and at City Hall or other central locations for a wider distribution.

For any questions or more information, please contact the CN Public Inquiry Line by telephone at 1-888-888-5909, or by email at [contact@cn.ca](mailto:contact@cn.ca).

Please also find our FAQ's regarding the program at the following address: [www.cn.ca/vegetation](http://www.cn.ca/vegetation).

Best regards,

Luanne Patterson  
Senior Systems Manager, Environmental Assessment